

YOUNG ENTREPRENEURS BUSINESS TRIP 4X4

Botswana - Namibia - Angola | Mozambique - Eswatini - South Africa

6 Countries

4 Water, Energy and Environment Forums

3 International Business Forums



April 26 - May 10, 2024
November 5 - 15, 2024



With the institutional support of



With the logistic support of



YOUNG ENTREPRENEURS BUSINESS TRIP 4X4

Botswana - Namibia - Angola | Mozambique - Eswatini - South Africa

An immersive experience in the African reality that is as diverse as the countries that will be visited. A trip that will allow to visit projects and make contacts in several African countries in 4x4 vehicles. This initiative combines adventure with business, always focusing on opening new opportunities for cooperation and synergies with local entities and companies.

An event organized by JEUNE in cooperation with several institutions from Europe and Africa.

This year, the trip will take place in two stages, one in April/May and one in November.

A unique experience that will take you across 6 African countries supporting local development while presenting new business opportunities.

BOTSWANA

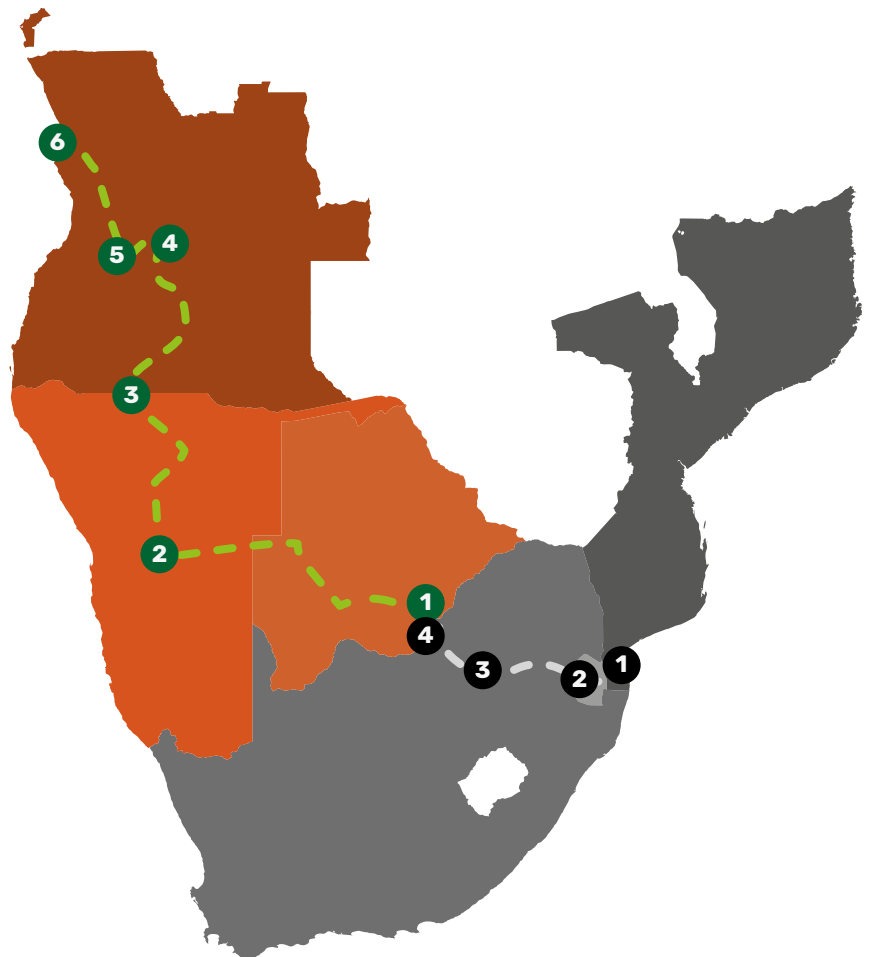
- 1 April 27 - 30 | Gaborone
April 30 - May 2 | Maun

NAMIBIA

- 2 May 3 | Windhoek
- 3 May 5 | Oshikango

ANGOLA

- 4 May 7 | Kuito
- 5 May 8 | Huambo & Luanda
- 6 May 9-10 | Luanda



Stage 1 PROGRAM



Jota @ BRAZIL, CC BY-SA 4.0, via Wikimedia Commons



BOTSWANA April 27 - May 3

Area - 581 730 km²

Population - 2 630 296 (2022)

GDP per capita (current US\$) - 7 737.7 (2022)

April 27 & 28 | Gaborone

Visit to local companies

April 29 | Gaborone



Water, Energy and Environment Forum 11th edition

The **Water, Energy and Environment Forum** is a discussion forum about the problems and solutions for water and wastewater management, energy management, energy saving solutions and environmental issues and solutions in each of the territories where it is promoted.

The forum is sponsored by BEWG.

April 30 | Gaborone

Visit to schools supported by the Program “100 schools, water and energy for all” and social work

The program “100 schools, water and energy for all” is a social initiative that intends to support schools (from elementary school to university) across these 6 African countries, granting them access to energy and water supply and school supplies to improve their learning conditions. The program also provides mentoring and integrates internships and professional experiences. Development comes from knowledge, by improving school’s conditions, we are supporting the construction of a better future..

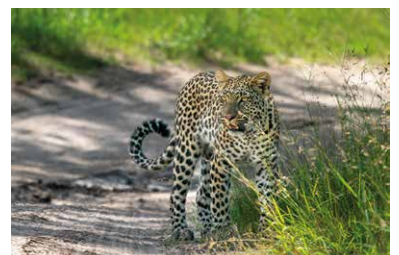
April 30 - May 2 | Maun



© Lifejourney4two

An incredible experience to be in tune with the nature, observing wildlife in the wild. A humbling experience that will make you understand better the necessary balance between need and survival.

A break from work and civilization to allow you to get in touch with your inner self and to explore new ways to face the future.



© Lifejourney4two

Stage 1 PROGRAM



By Harald Süpfle, CC BY-SA 2.5, via Wikimedia Commons



NAMIBIA May 3-5

Area - 824 292 km²

Population - 2 567 012 (2022)

GDP per capita (current US\$) - 4 911.3 (2022)

May 3 | Windhoek

May 5 | Oshikango



ANGOLA May 7-10

Area - 1 247 000 km²

Population - 35 588 987 (2022)

GDP per capita (current US\$) - 2 998.5 (2022)



**Water, Energy and
Environment Forum**

12th edition - Kuito, May 7

13th edition - Luanda, May 9

May 7 | Kuito

Water, Energy and Environment Forum

Visit to schools supported by the Program "100 schools, water and energy for all" and social work

May 8 | Huambo

Networking lunch

May 8 | Luanda

Networking Dinner

May 9 | Luanda

Water, Energy and Environment Forum

MOZAMBIQUE

- 1 November 5 | Maputo
- November 6 | Matola
- November 7 | Maputo

ESWATINI

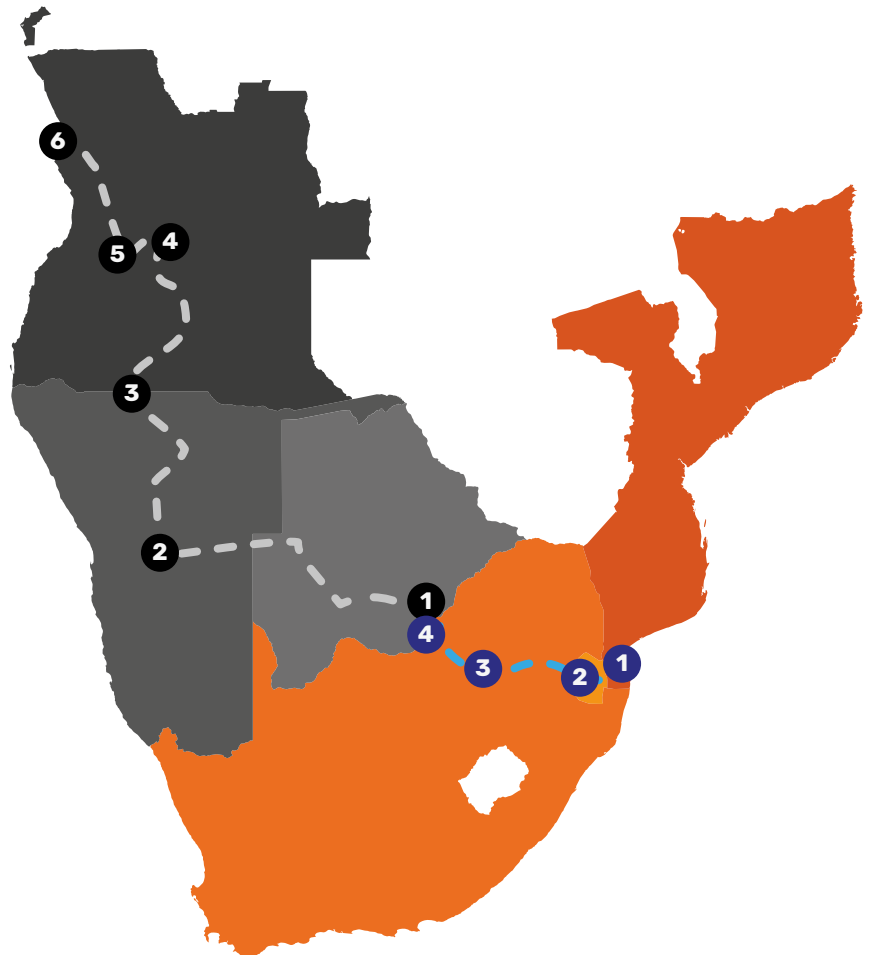
- 2 November 9

SOUTH AFRICA

- 3 November 11 & 12 | Johannesburg

BOTSWANA

- 4 November 15 | Gaborone



Stage 2 PROGRAM



MOZAMBIQUE Nov 5-8

Area - 801 590 km²

Population - 32 969 518 (2022)

GDP per capita (current US\$) - 542.5 (2022)

Nov 5 | Maputo

Welcome Dinner with the Portuguese-Speaking Countries' Ambassadors

Nov 6 | Matola

FIN Business Forum (including Water, Energy and Environment Forum)



2nd edition

FIN Business Forum Mozambique is part of the “5 events, 4 continents in Portuguese” project. On this day, lectures will be promoted with a focus on sharing knowledge and stimulating networking with particular focus on supporting young entrepreneurship and supporting entrepreneurs with mentoring and awards.



Water, Energy and Environment Forum

17th edition

The Water, Energy and Environment Forum is a discussion forum about the problems and solutions for water and wastewater management, energy management, energy saving solutions and environmental issues and solutions in each of the territories where it is promoted.

The forum is sponsored by BEWG.

Nov 7 | Maputo

Dinner with the Development Banks and Development Funds delegations

Nov 8

Visit to schools supported by the Program “100 schools, water and energy for all”



The program “100 schools, water and energy for all” is a social initiative that intends to support schools (from elementary school to university) across these 6 African countries, granting them access to energy and water supply and school supplies to improve their learning conditions. The program also provides mentoring and integrates internships and professional experiences. Development comes from knowledge, by improving school’s conditions, we are supporting the construction of a better future.

Stage 2 PROGRAM



By Eswatini Tourism - Twitter, CC BY-SA 4.0



ESWATINI **Nov 9**

Area - 17 363 km²

Population - 1 201 670 (2022)

GDP per capita (current US\$) - 4 039.5 (2022)

Nov 9

Visit to schools supported by the Program “100 schools, water and energy for all” and social work



By Evan Bench, CC BY 2.0, via Wikimedia Commons



SOUTH AFRICA **Nov 11&12**

Area - 1 220 000 km²

Population - 59 893 885 (2022)

GDP per capita (current US\$) - 6 776.5 (2022)

Nov 11 | Johannesburg

Forum JEUNE and African Union Leaders



In cooperation with the Think Tank “Pensar Africa” (Thinking Africa), JEUNE will promote a Forum with the African Union Leaders to reflect on some issues that have direct impact on the development of the African continent, trying to find new opportunities for growth.

Dinner with China Development Bank



Established in 1994, the China Development Bank is a state-funded and state-owned development finance institution. As an independent legal entity directly overseen by the State Council, it is dedicated to supporting China’s economic development in key industries and under-developed sectors.

Stage 2 PROGRAM

Nov 12 | Johannesburg

FIN Business Forum South Africa



A Forum to reflect on energy, renewable energy, infrastructures and entrepreneurship.

The first FIN made outside of the Portuguese-Speaking Countries with the aim of constructing even more bridges with nations connected with lusophone countries, as is the case of South Africa through BRICS.



Jota @ BRAZIL, CC BY-SA 4.0, via Wikimedia Commons



BOTSWANA Nov 15

Area - 581 730 km²

Population - 2 630 296 (2022)

GDP per capita (current US\$) - 7 737.7 (2022)

Nov 15 | Gaborone

Visit to schools supported by the Program “100 schools, water and energy for all” and social work

Visit to European Union Delegation to SADC and Botswana

The European Union and Botswana enjoy longstanding relations of friendship and cooperation. The first EU office was opened in Gaborone in 1981 and the role of the Delegation was expanded in 1991 when the Southern African Development Community (SADC) Secretariat was established in Gaborone covering political relations, security, development cooperation, economic and trade relations, and other areas of mutual interest between the EU and Botswana as well as SADC.

YOUNG ENTREPRENEURS BUSINESS TRIP 4X4

Botswana - Namibia - Angola | Mozambique - Eswatini - South Africa



Participation fee (per person)

Stage 1 **3200 euros**

Stage 2 **3700 euros**

What is included

Hotel stay with breakfast

Lunch and dinner

4x4 rental fee (including fuel and tolls)

Participation fee at FIN Business Forums

Participation fee at Water, Energy and Environment Forums

Social activities

Tourism activities

Premium business networking

Invitation Letter for visa application

Please note that any expense made outside of the program, or of the places designated by the organization, will be the participant's sole responsibility.

With the institutional support of



With the logistic support of

